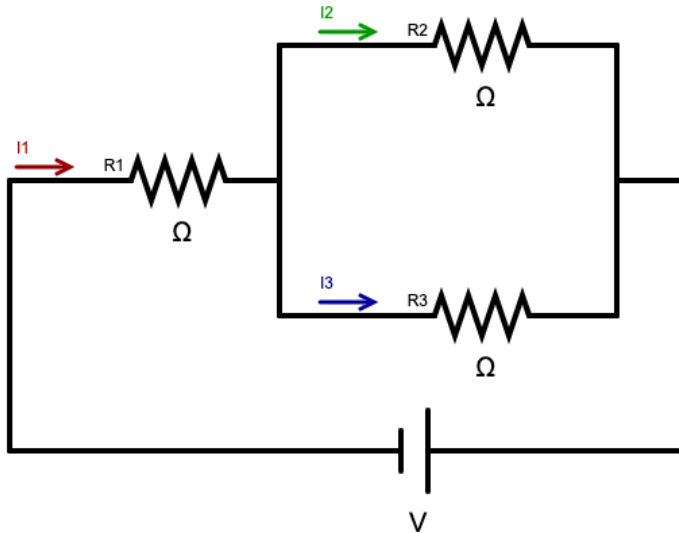


Current in Parallel in Series Circuit

Step 1: Fill in the values of your resistors and your battery



Step 2: Calculate the total resistance and the total current in the circuit. Show your work neatly below.

Step 3: Calculate the current through each resistor. Put these values in your picture above. Show your work for at least one resistor below.

Step 4: Finally, enter your answers into the program to make sure you did everything correctly.