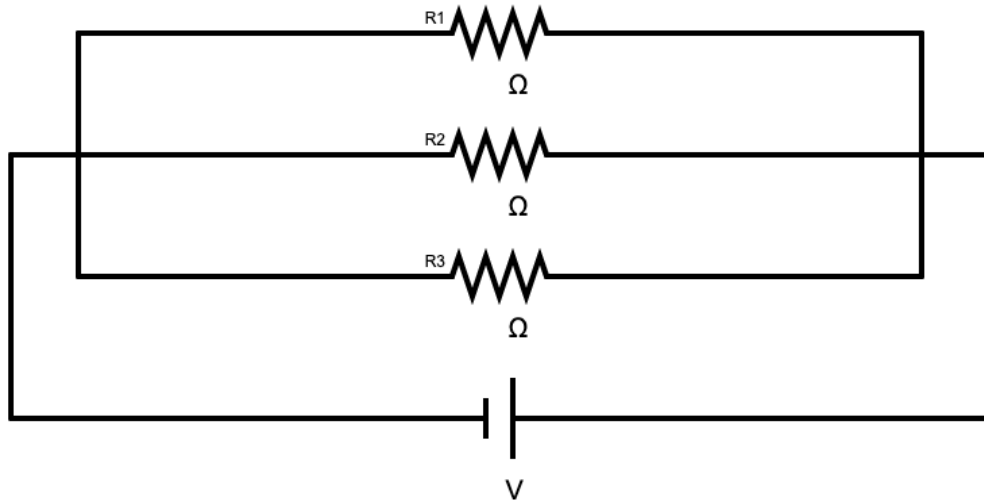


Parallel Circuit

Step 1: Fill in the values of your resistors and your battery. Draw in the flow of your current..



Step 2: Calculate the total resistance and the total current in the circuit. Show your work neatly below.

Step 3: Calculate the voltage across each of the resistors, the current through each resistor, and the energy lost per second (Power) for each resistor. Put these values in your picture above. Show your work for at least one resistor below.

Step 4: Finally, enter your answers into the program to make sure you did everything correctly.

