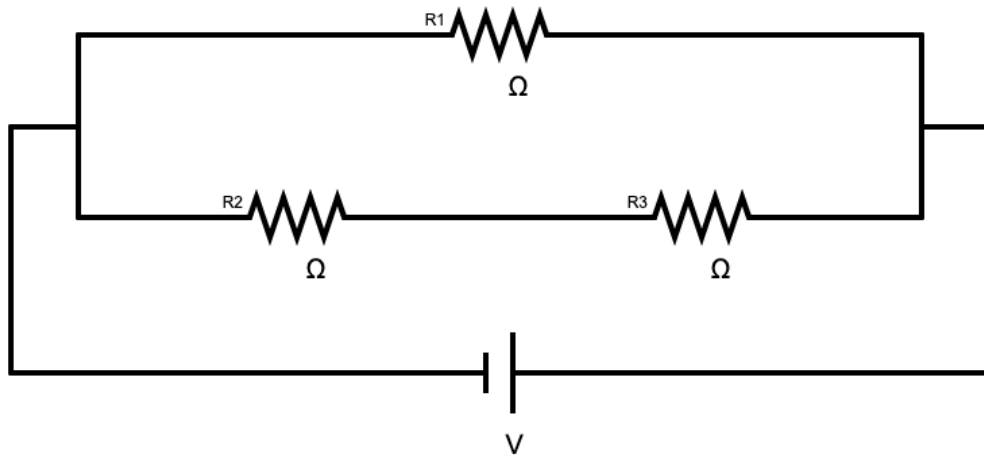


# Series in Parallel Circuit

Step 1: Fill in the values of your resistors and your battery. Draw in the flow of your current.



Step 2: Calculate the resistance of the series branch and then the total resistance of the circuit. Show your work neatly below.

Step 3: Calculate the current in each of the branches of the circuit. Show your work neatly below.

Step 4: Calculate the voltage and power for each individual resistor. Show your work for at least one resistor. Put all your values for current, voltage, and power into your picture.

Step 5: Finally, enter your answers into the program to make sure you did everything correctly.